

davit masts

The davit mast separates from the boom and is transportable by means of a permanent pair of wheels at one end. Davit pivoting pins are provided for connection to the davit base. The turning bracket & handle permit easy boom rotation from inside the platform.

All standard masts have a rated capacity of 1150 lbs. or 525kg.

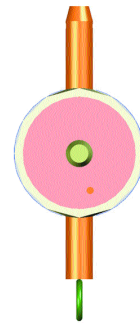
options:

Davit lifting bracket, manual lifting hoist, davit turning handle.

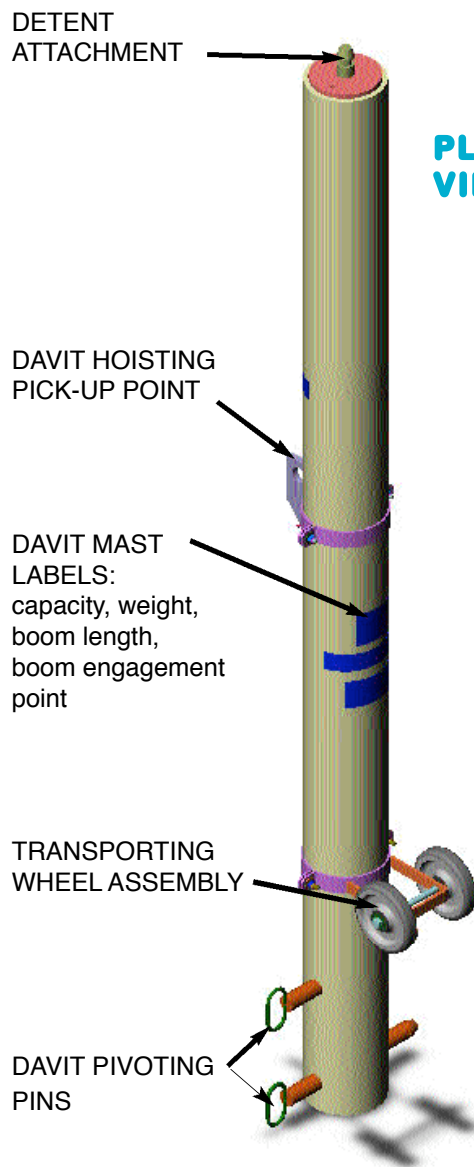
materials:

Type 6061 T-6 aluminum, G40.21-44W galvanized steel Fy = 44 KSI, A307 zinc plated or A325 galvanized steel, rubber/urethane wheels.

TOP VIEW



PLAN VIEW



boom reach	model no.	height (H)	weight
3' to 6'-6"	DAM2062-000S*	62 3/4" - 1594 mm	88 lbs - 40 kg
3' to 6'-6"	DAM2072-000S	72" - 1829 mm	102 lbs - 46 kg
3' to 6'-6"	DAM2130-000S	130" - 3302 mm	156 lbs - 71 kg
3' to 6'-6"	DAM2150-000S	150" - 3810 mm	173 lbs - 79 kg

* Transporting Wheels Optional

davit booms

The davit boom separates from the mast for ease of transportation. The boom rotates smoothly around the mast on a unique roller collar, while a captive trolley rolls within the custom extrusion, to allow optimum positioning of the work platform it suspends. See General Information T4751 page 2.

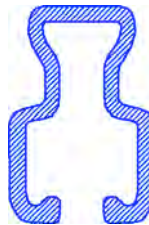
All booms have a rated capacity of 1150 lbs. or 525kg.

materials:

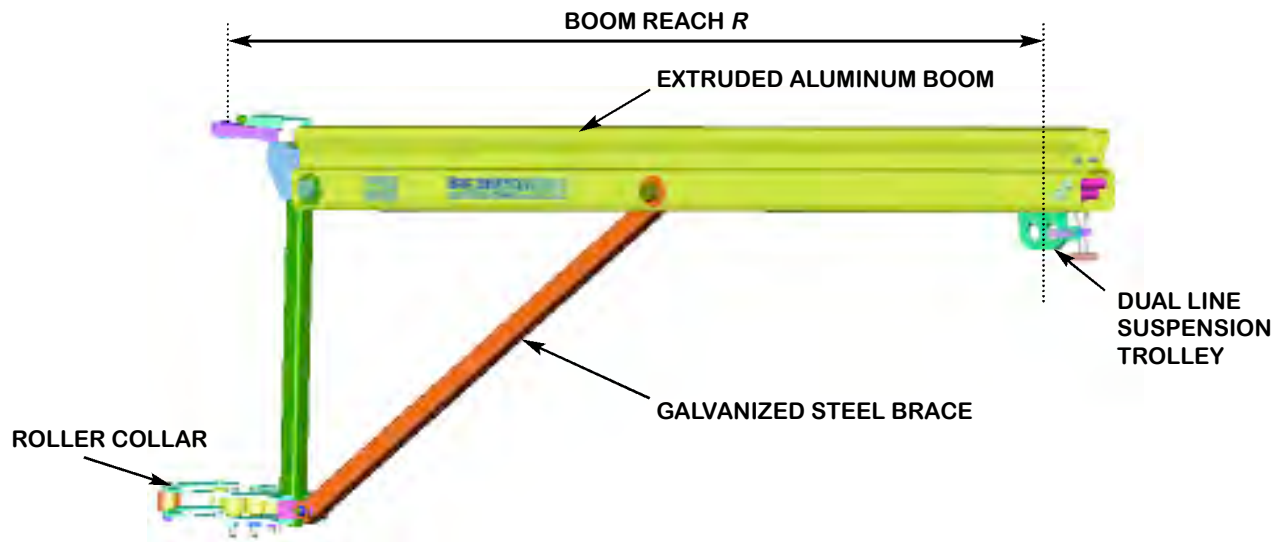
Type 6061 T-6 aluminum, G40.21-44W galvanized steel $F_y = 44$ KSI, A307 zinc plated steel, A307 zinc plated or A325 galvanized steel fasteners, bronze bushings.

DAVIT BOOMS series DAB

Model #	Boom Reach R	Weight
DAB-030-001	3' - 0" - 915 mm	60.3 lbs - 27.4 kg
DAB-036-001	3' - 6" - 1067 mm	62.8 lbs - 28.6 kg
DAB-040-001	4' - 0" - 1219 mm	65.3 lbs - 29.7 kg
DAB-046-001	4' - 6" - 1372 mm	69.6 lbs - 31.6 kg
DAB-050-001	5' - 0" - 1524 mm	72.1 lbs - 32.8 kg
DAB-056-001	5' - 6" - 1676 mm	74.6 lbs - 33.9 kg
DAB-060-001	6' - 0" - 1829 mm	77.1 lbs - 30.0kg
DAB-066-001	6' - 6" - 1981 mm	79.6 lbs - 36.2 kg



ALUMINUM EXTRUSION SECTION
series DAB



**davit pedestals for short reach davits
(under 6' - 6" reach)**

Of the various types of Davit Systems available, those incorporating fixed davit pedestals and portable bases provide the most effective and economical solution.

These portable systems are most effective on smaller, single level applications, and are accepted by many regional codes. The portable davit bases are then moved from location to location, along with the powered platform.

All varieties of pedestals are available for every mounting method, including new or retrofit applications. Fig. 2 shows a typical detail, and other attachment methods are available.

Fixed pedestal models are also available.

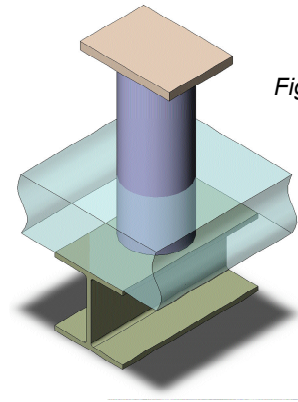


Fig. 1

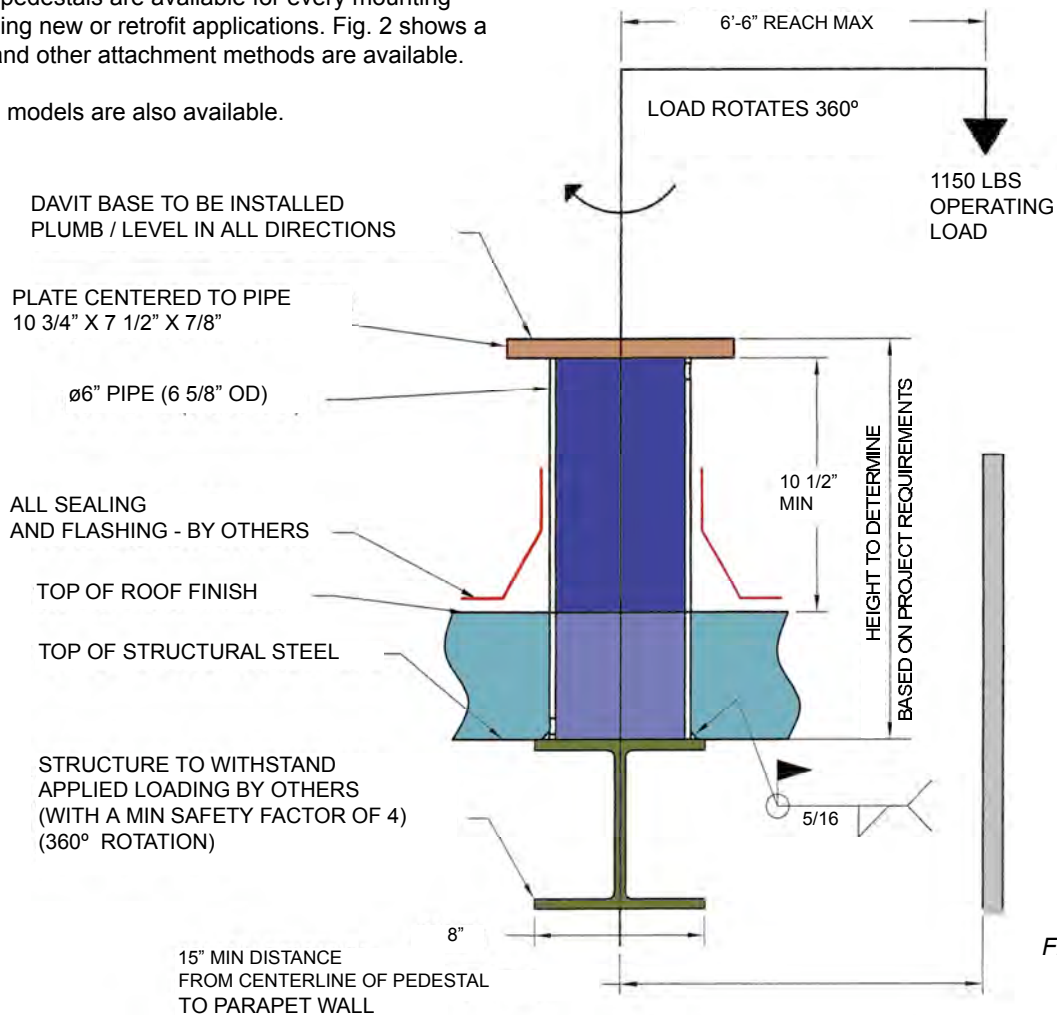


Fig. 2

ref. no.	maximum davit boom reach	weight
PB2-SO-XXS	6'-6" (1.98 m)	56 lbs (25 kg)

**davit pedestals for short reach davits
(under 6' - 6" reach)**

Of the various types of Davit Systems available, those incorporating fixed davit pedestals and portable bases provide the most effective and economical solution.

These portable systems are most effective on smaller, single level applications, and are accepted by many regional codes. The portable davit bases are then moved from location to location, along with the powered platform.

All varieties of pedestals are available for every mounting method, including new or retrofit applications. Fig. 2 shows a typical detail, and other attachment methods are available.

Fixed pedestal models are also available.

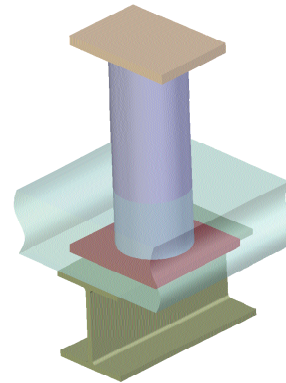


Fig. 1

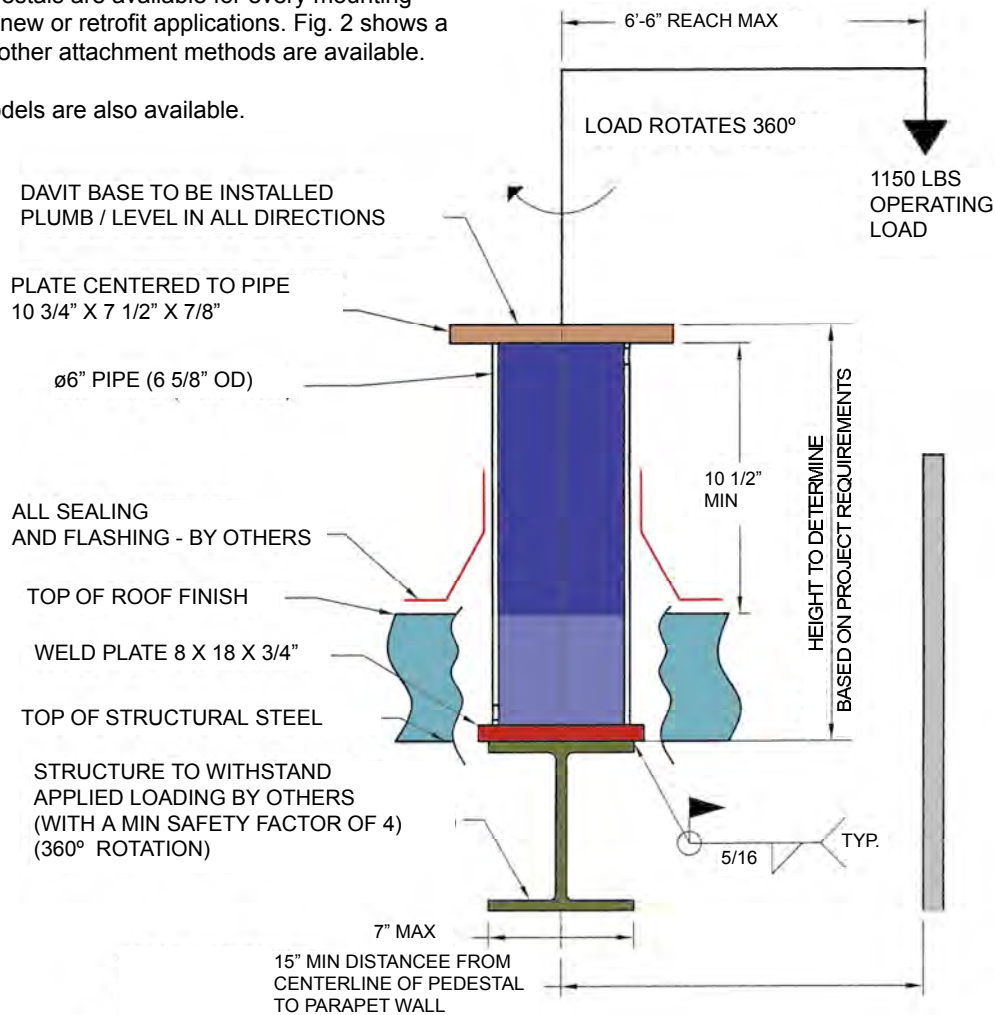


Fig. 2

ref. no.	maximum davit boom reach	weight
PB2-SP-XXS	6'-6" (1.98 m)	56 lbs (25 kg)

**davit pedestals for short reach davits
(under 6' - 6" reach)**

Of the various types of Davit Systems available, those incorporating fixed davit pedestals and portable bases provide the most effective and economical solution.

These portable systems are most effective on smaller, single level applications, and are accepted by many regional codes. The portable davit bases are moved from location to location, along with the powered platform.

All varieties of pedestals are available for every mounting method, including new or retrofit applications. Fig. 2 shows a typical detail, and other attachment methods are available.

Fixed pedestal models are also available.

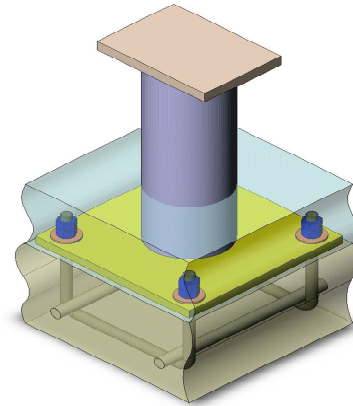


Fig. 1

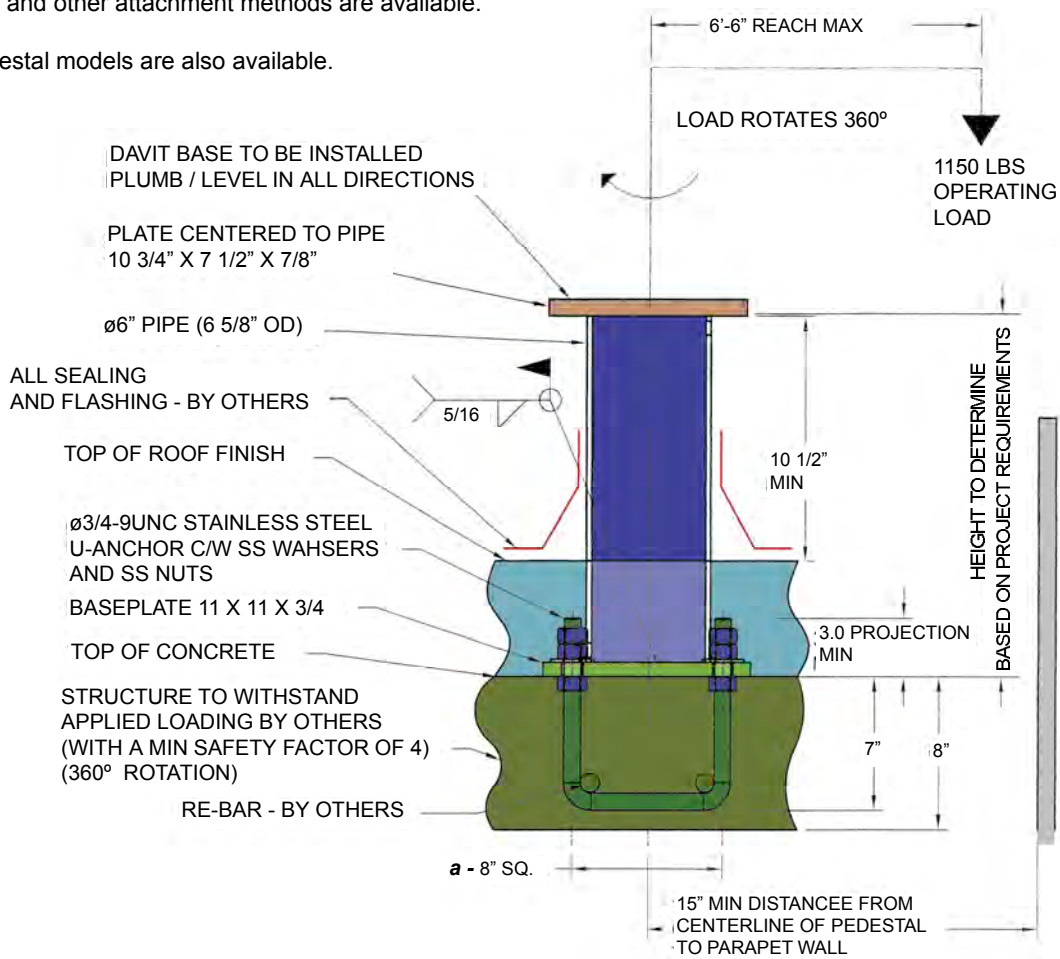


Fig. 2

ref. no.	maximum davit boom reach	a	weight
PB2-EP1-XXS	6'-6" (1.98 m)	8" (203 mm)	56 lbs (25 kg)

**davit pedestals for short reach davits
(under 6' - 6" reach)**

Of the various types of Davit Systems available, those incorporating fixed davit pedestals and portable bases provide the most effective and economical solution.

These portable systems are most effective on smaller, single level applications, and are accepted by many regional codes. The portable davit bases are moved from location to location, along with the powered platform.

All varieties of pedestals are available for every mounting method, including new or retrofit applications. Fig. 2 shows a typical detail, and other attachment methods are available.

Fixed pedestal models are also available.

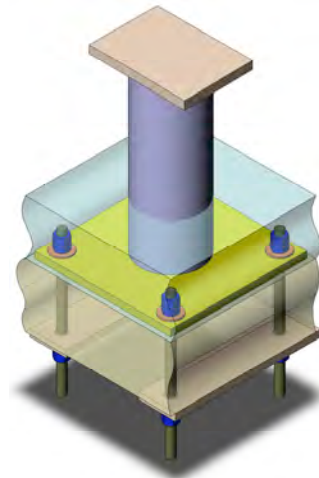


Fig. 1

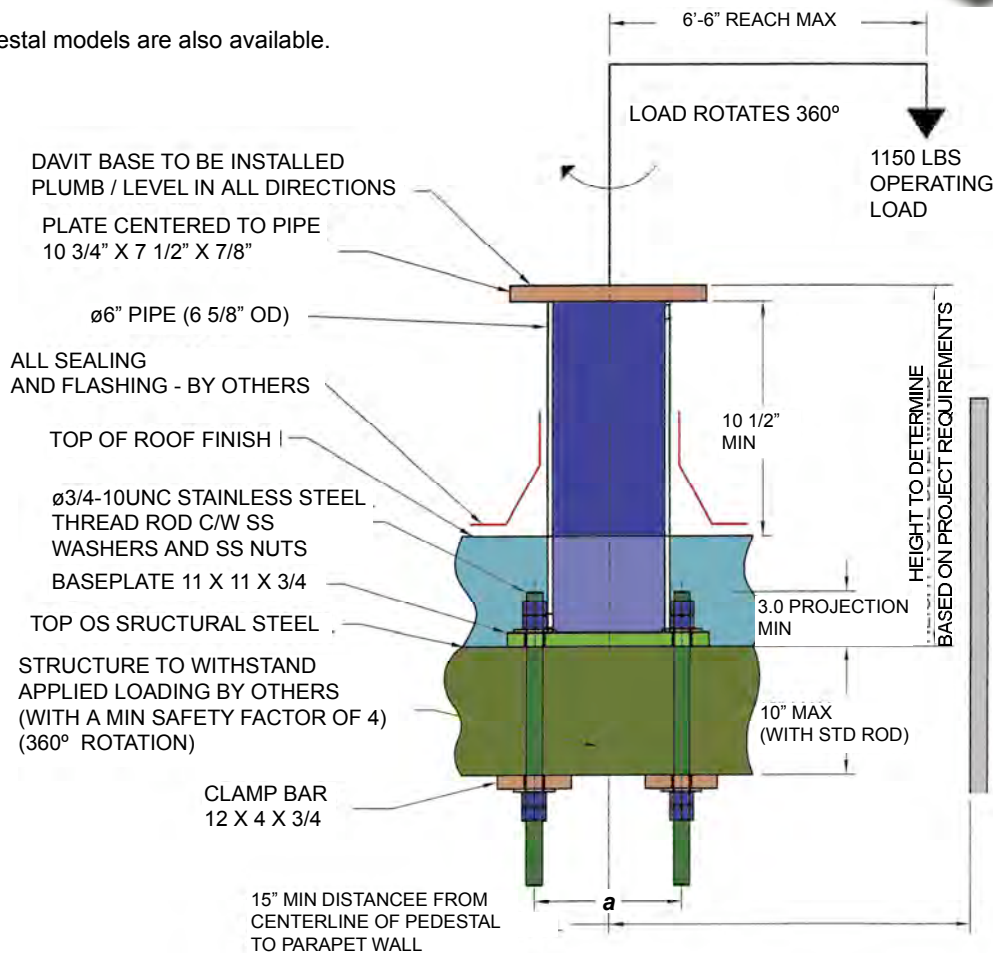


Fig. 2

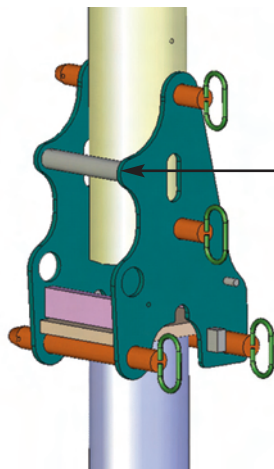
ref. no.	maximum davit boom reach	a	weight
PB2-TP-XXS	6'-6"(1.98 m)	8" (203 mm)	56 lbs (25 kg)

**davit bases for short reach davits
(under 6' 6" reach)**

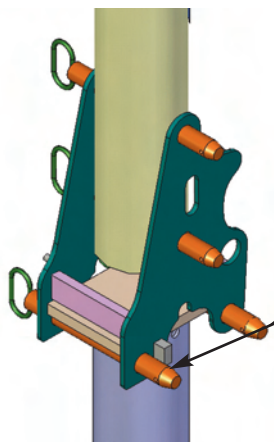
Of the various types of Davit Systems available, those incorporating fixed davit pedestals and portable bases provide the most effective and economical solution.

These portable systems are most effective on smaller, single level applications, and are accepted by many regional codes. The portable davit bases are moved from location to location, along with the powered platform.

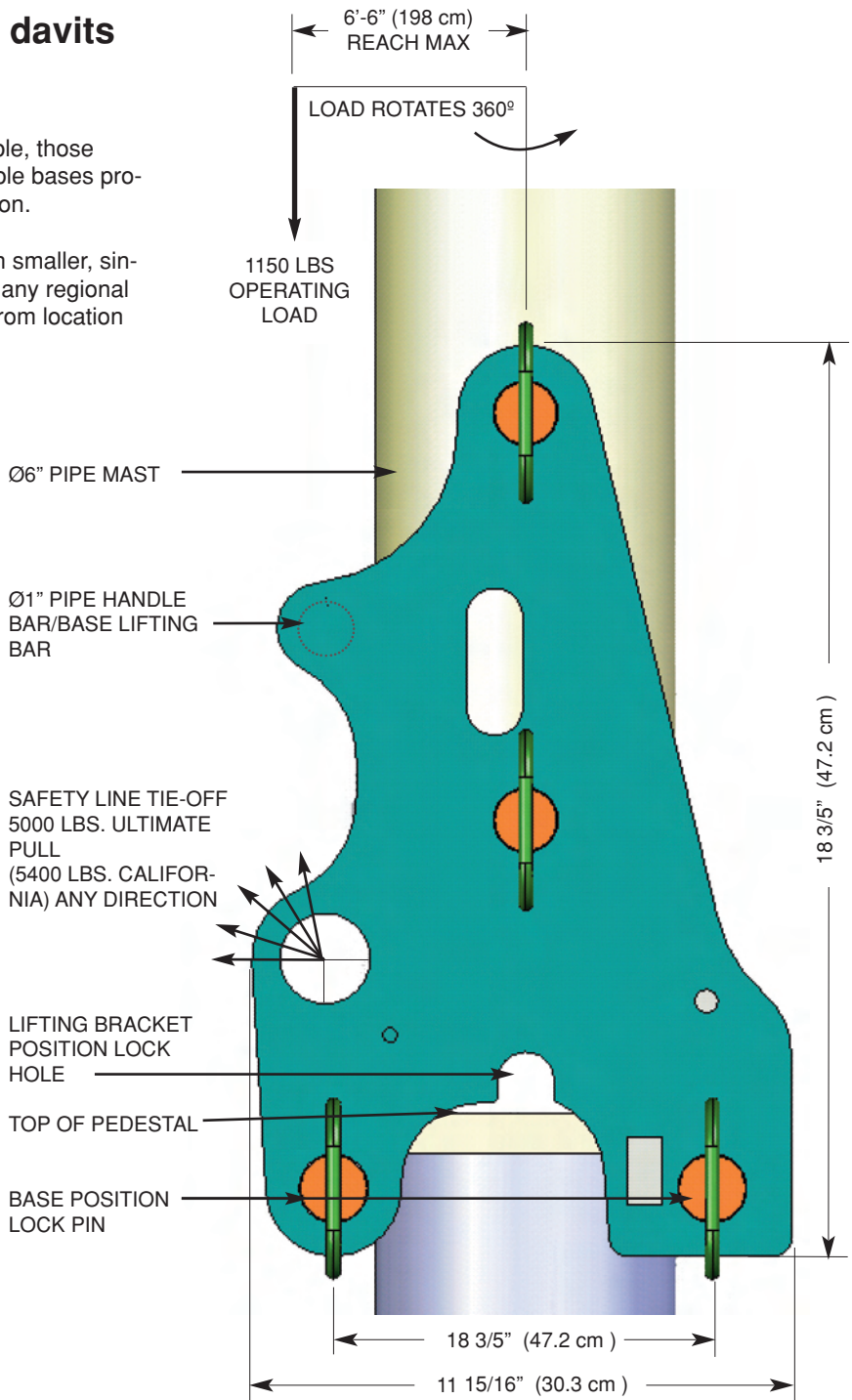
Fixed davit bases are also available.



FRONT VIEW



BACK VIEW



ref. no.	maximum davit boom reach	weight
DS2-P-010D	6' - 6" (1.98 m)	36.4 lbs. (16.5 kg)